

Luffa Shampoo

"Strengthen a hair + Scalp healing"

Towel Gourd, constituting **45%** of total ingredients,
naturally fermented via a traditional method and
matured for 1~2 years is contained.



1. Towel Gourd containing saponin, Giberlin, Galactose, xylyose, fiber, and etc is used as a medicinal purpose.
2. Along with a fermented organic towel gourd liquid, sulfur compound beneficial for strengthening a component of skin and hair is included.
3. The quality is proved by many users with scalp trouble.
4. Protect your hair with included L-arginine(amino acid), which provides a nutrition and moisturizes hair with increasing hair volume.
5. Included mango and madarine scent helps in refreshing a mood.



Night care for cleansing a waste



Morning care for renewing vigor in skin due to peppermint

User's instruction

1. Please shampoo a hair at night and shampoo a hair lightly in the morning.
2. After applying a shampoo to hair, leave your hair for 3~5 min. to clean a scalp and balance pH balance, and kill bacteria due to an acetic acid produced from a fermentation.
3. Wash a hair not to leave residue
4. Dry a hair not to leave a moisture.

Kaki Shampoo

"Strong conditioning + Trouble care"

Persimmon, constituting **40%** of total ingredients,
fermented via a traditional method
and matured for **2 years** is contained.



1. Persimmon contains plenty of 60 kinds organic acid such as citric acid, acetic acid, and malic acid, vitamin C and tannin.
2. This is an outcome as a result of establishing the optimal fermentation condition to exert each element's synergetical effect.
3. Contained a sulfur compound 3000-fold more than sulfur spa's.
4. Included mango and grapefruit scent helps in refreshing a mood.



Night care for cleansing a waste



Morning care for renewing vigor in skin due to peppermint

User's instruction

1. Please shampoo a hair at night and shampoo a hair lightly in the morning.
2. After applying a shampoo to hair, leave your hair for 3-5 min. to clean a scalp and balance pH balance, and kill bacteria due to an acetic acid produced from a fermentation.
3. Wash a hair not to leave residue
4. Dry a hair not to leave a moisture.



CHITOSAN SULFUR BALM

Balanced nourishment

Soft and moist

Premium Trouble Intensive Care
Chitosan + Sulfur + Horse oil Plus Stick Balm

Chitosan that has excellent moisturizing and human affinity + the highest quality refined horse oil Plus



Special Functional Optimal Collaboration

The beginning of the cleansing of troubled skin, completed with thousands of scale-ups!



Enhanced stability



EWG safety ratings (1 to 2)

It protects the skin with a safety rating, natural ingredients, and fresh scent that the whole family can use safely.

Moisturizing/protecting and intensive care

for troubled and sensitive areas.

Chitosan and patented composite sulfur help relieve skin troubles and itchiness and remove dead skin cells.

It moisturizes and protects your skin with purified horse oil that looks most like your skin.



Balanced nourishment

a sense of natural feeling

Natural oils (evening primrose, camellia, lavender, lemon), shea butter, and horse oil provide moisture and nutrition quickly to dry and itchy areas with a fresh, non-sticky finish.

Luxurious and easy to use and carry

It gives you luxury with premium product.



Low stimulus care with nature-originated ingredients

Chitosan



키토산



Refined horse oil



정제마유



감열매 2년발원액

Two-year-old undiluted
extracts of persimmon



복합유황 Composite sulfur



시어버터

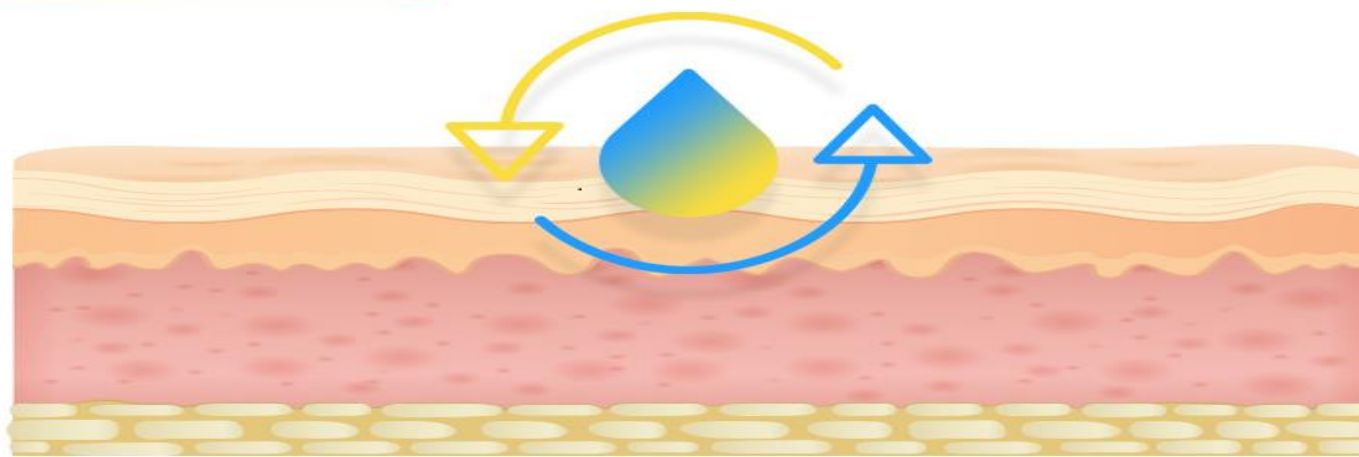
Shea butter

Moisturizing + Nourishing = Balance

Undiluted persimmon that is fermented and aged for two years, evening primrose, camellia seed, lavender, lemon, and menthol ingredients nourish and moisturize the skin. Sulfur and chitosan ingredients take care of the troubled skin.

It gives the best balance to the skin with the best ingredients.

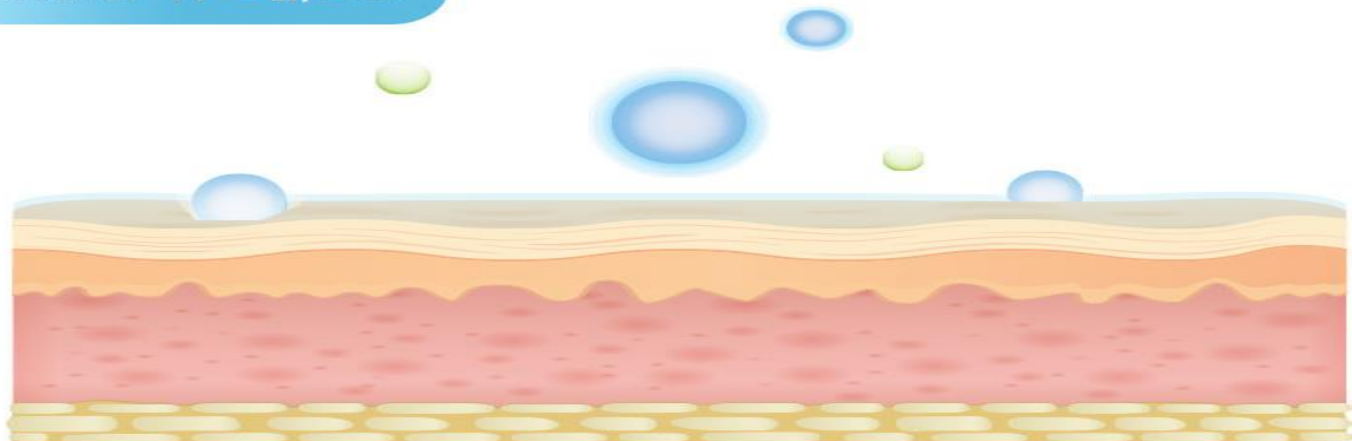
STEP1. 트러블 케어



Trouble care

Chitosan + composite sulfur + mature solution – these three ingredients are mixed in the best ratio to balance the oil and moisture of the skin and take care of the skin trouble!

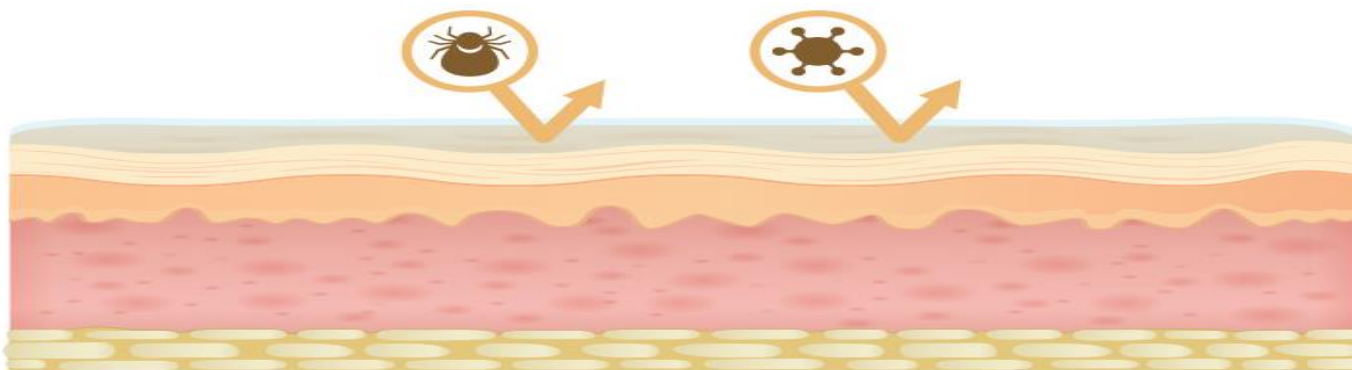
STEP2. 피부 보습/보호



Skin moisturizing/Protection

Shea butter, horse oil, and natural oils moisturize the skin and form a moisturizing film!

STEP3. 천연미네랄



Natural mineral

Tocopherol and natural minerals protect your skin and keep it healthy!

[Review]

The fantastic effect of the Chitosan Sulfur Balm experienced by customers who used it already.

BEFORE & AFTER

먼저 사용하신 고객님들이 경험하고있는 **키토산 유황밤** 의 놀라운 효과



Use Chitosan Sulfur Balm for:



01

The dry and itchy skin

Apply it to the dry and itchy areas for the fresh feeling.



02

The troubled skin and scalp

Apply to the troubled areas.

It has natural ingredients that can be used for scalp and hair.



03

The sensitive skin

Apply it to the dry and sensitive areas frequently.



[Method of Use]

Turn the button to release the product. Apply it over the dry and itchy areas.

[Usage Tips]

1. Apply it frequently around dry, exfoliated, rough skin (face, body, scalp) to soothe instantly.
2. It is easy to use on dry lips and sensitive areas with a clean, natural, non-stick finish.
3. The natural ingredients enhance product safety and can also be used on the scalp and hair (for styling, shining, moisturizing).

[Method of Use]

Turn the button to release the product. Apply it over the dry and itchy areas.

[Usage Tips]

1. Apply it frequently around dry, exfoliated, rough skin (face, body, scalp) to soothe instantly.
2. It is easy to use on dry lips and sensitive areas with a clean, natural, non-stick finish.
3. The natural ingredients enhance product safety and can also be used on the scalp and hair (for styling, shining, moisturizing).

Description: Chitosan Sulfur Balm

Weight: 20g (Black) / 35g (White)

[Ingredients] Evening primrose oil, camellia seed oil, beeswax, candelilla wax, octyldodecanol, lavender oil, lemon peel oil, shea butter, tocopheryl acetate, horse oil, menthol, persimmon extract, chitosan, dimethyl sulfone, trehalose, 1,2-hexanediol, citral, geraniol, linalool, limonene